

| Edit Image Basics in Photoshop | by Serena Carpenter

Crop

1. Use **cropping tool** crop to resize the photo. When photo looks good, select return.



Levels

1. Image > Adjustments > Levels (brightness/contrast levels - ratio of light to dark in the image.) Contrast creates depth. Adjusting the black and white levels.
 - a. Use Auto button or Drag slides to set the darkest, lightest and mid-point values. Drag triangle to set overall brightness and black density

Black and White Image

1. Image > Adjustments > Black and White

Rotate Image

1. Image > Rotate Canvas > Select Appropriate Change

| Using Photoshop to Correct Photos: Red Eye, Lighten/Darken Images, & Color Correction |

Tips

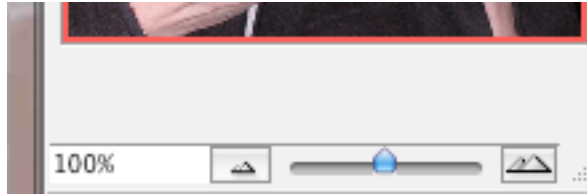
1. It is advised to create a copy of the original.
2. White to reveal and black to conceal is another tip.
3. D takes you to default black and white. X switches color palette colors.

Red Eye

1. File > Open Image
2. Layer > Duplicate Layer



3. Select the Red Eye tool from the Tools Palette



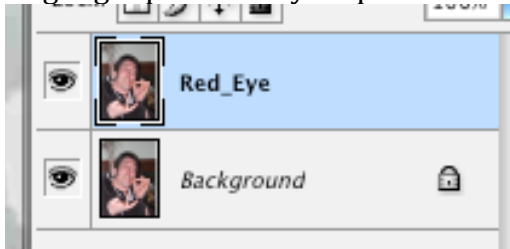
4. Zoom closer into the eye
5. Place the cross in the middle of the eye and drag toward the outer edge of the eye multiple times until red eye is gone.
6. File > Save As or Save for the Web & Devices if publishing to the web.

Lighten Image

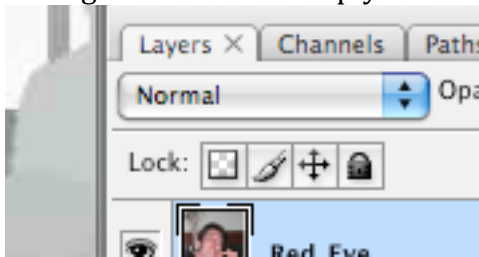
1. File > Open Image
2. Layer > Duplicate Layer
3. Highlight photo in layers palette
4. Change Normal to Screen blending mode in the layers palette.
5. Save image if you like the darken state of the photo.

Darken Image

6. File > Open Image
7. Layer > Duplicate Layer
8. Highlight photo in layers palette



9. Change Normal to Multiply blending mode in the layers palette.



10. Save image if you like the darken state of the photo.

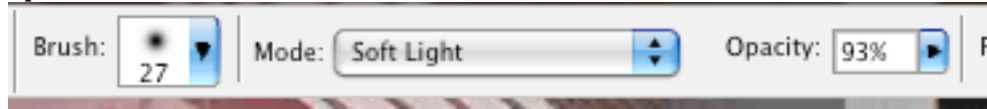
Select Image Areas to Lighten or Darken with Brush Tool

If you would like to adjust the brightness of areas of the photo, follow these instructions:



1. Select the Brush Tool

2. Select a diffused Brush and select Soft Light from the dropdown menu in the Options bar.



3. *To lighten*, make sure the white color is activated in the toolbar
4. Paint the area you would like to lighten with the brush tool. Adjust the opacity if the changes are too extreme.
5. *To darken*, select X or switch color to black. Paint the area you would like to



darken.

Overall Color Correction

1. Filter > Blur > Average
2. Command - I (Inverse)
3. Select Overlay on dropdown menu in the layers palette